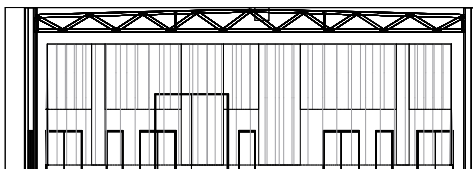


**Frontview**



**Dimensions Studio**

Surface studio floor = 1210m<sup>2</sup>  
Dimensions Entrance Gate = 3m80W x 4m00H

**Dimensions Beams Studio**

Height to beams = 07m30  
Height to ceiling = 08m60  
Distance between beams = 04m00

**Loading Figures Studio**

Max. load/beam = 4000kg/beam or qload = 200kg/m  
Max. allowed loads/beam  
- center point (CPL) = 1700 kg (middle of a beam)  
- double point (TPL) = 1400 kg (each point on 1/3th of the total beam length)  
Max allowed floorpressure = 1000kg/m<sup>2</sup>

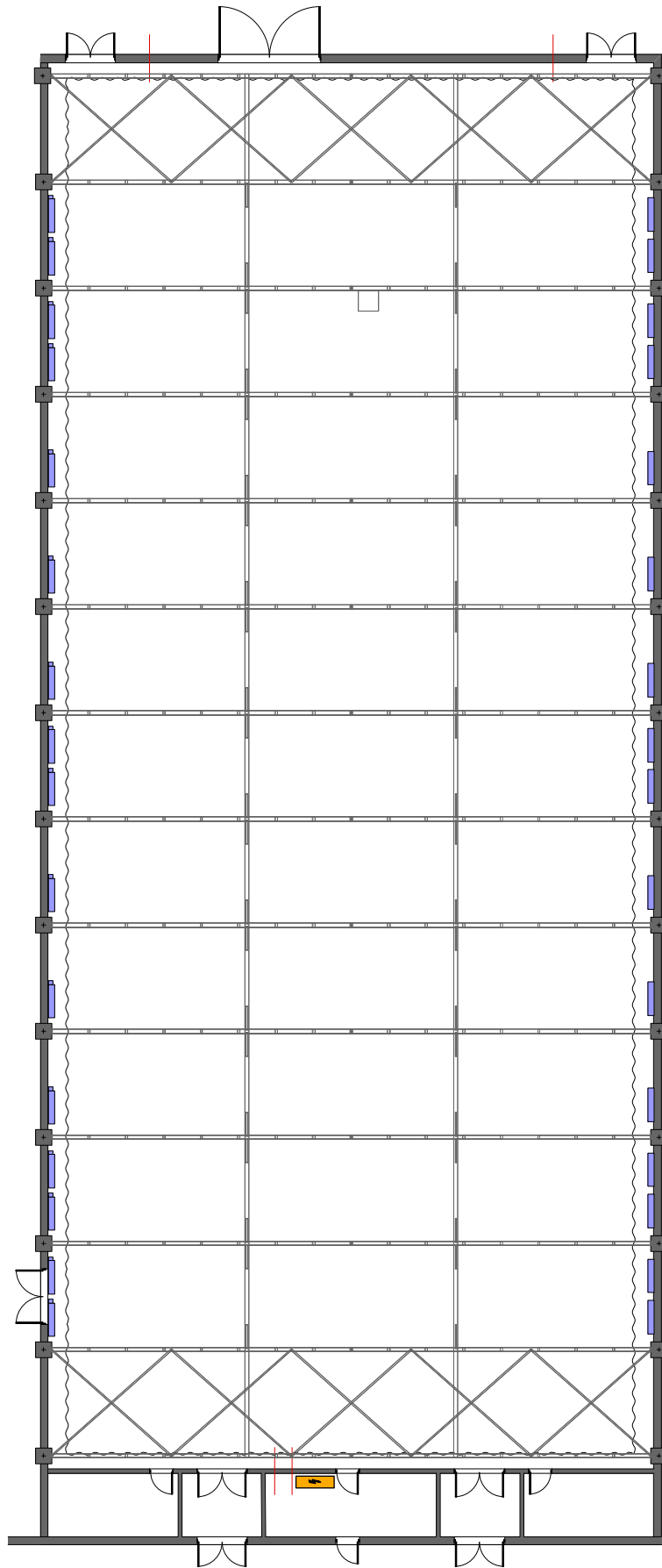
**Electrical Power**

2 x 400A Powerlock connection  
2 x CEE125A connection 5p (3PH+N+E)  
2 x CEE32A connection 5p (3PH+N+E)  
Cable passages to backstage area and technical area  
Main Circuit board

**Other Information:**

The studio is equipped with an airco-system, which is installed at approx. 7m25 above floor level (see plan for exact locations).

 <p><b>AED Studios</b> Fabriekstraat 38 2547 Lint Belgium www.aedstudios.com</p>	Studio/Room	<h1>Studio 01</h1>	Papersize A4
	Plan type	<h2>Overview</h2>	Units [mm]
			Scale 1:400
			Version V1



 <p><b>AED Studios</b>          Fabrikstraat 38          2547 Lint          Belgium  <a href="http://www.aedstudios.com">www.aedstudios.com</a></p>	Studio/Room	<b>Studio 01</b>	Papersize A4
	Plan type	<b>Empty Plot</b>	Units [mm]
			Scale 1:250
			Version V1