



Studio 6 Food and Drinks

The company restaurant Studio 6 Food and Drinks offers a range of possibilities in the field of catering. With a capacity of 250 people both crew members and artists can eat here. Studio 6 is the ideal location for dinners, receptions or walking dinners in a beautiful setting. A separate VIP terrace on the first floor offers the possibility to discuss business in a peaceful environment. Our chef provides refined culinary delights for lunch or during your meeting. In short, Studio 6 is the ideal setting for an elegant gathering and has all luxury and comfort you need.

DIMENSIONS

Stage floor:	288m ²	(3.100 ft ²)
Length:	24m	(79ft)
Width:	12m	(39ft)
Height to ceiling	5m	(16ft)

POWER	1x 125A CEE
	2x 63A CEE

OTHERS

- Permanently installed sound, light and video
- Exclusive VIP/production mezzanine
- Outdoor summer terrace: 300m² (3.229ft²)

WALLS

50m grey (164ft)

EXTRA'S

- Kitchen
- Toilets
- Bar

CAPACITY

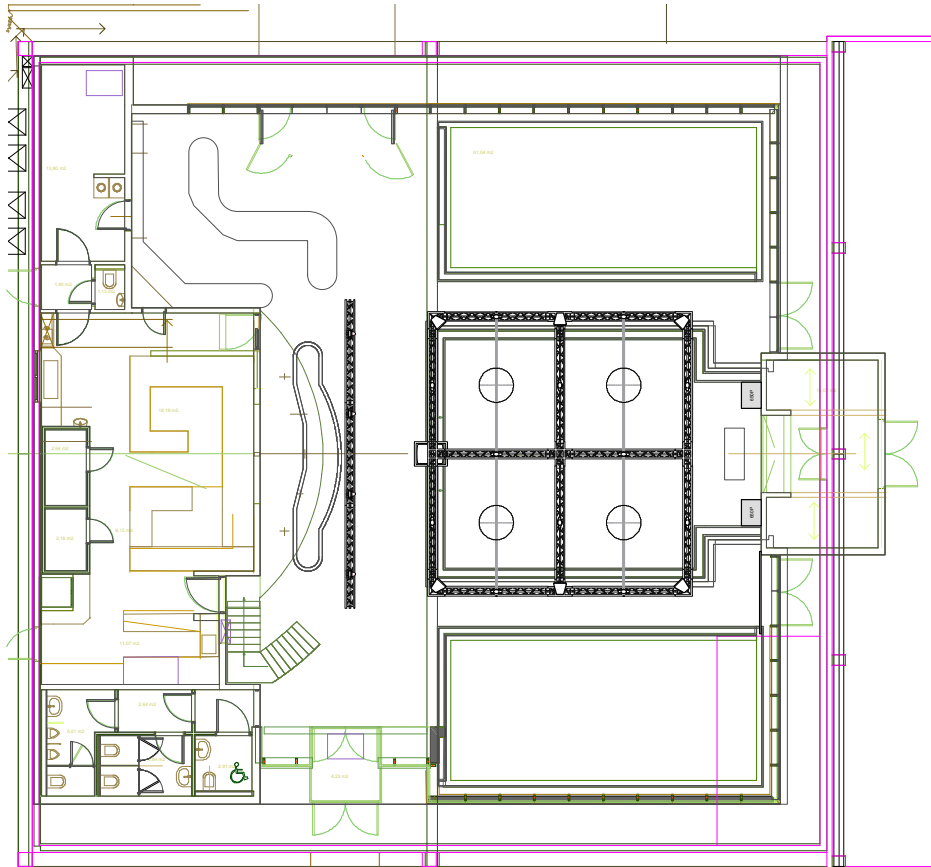
- Dinner: ±130 people
- Reception: ±250 people
- Academic: ±175 people



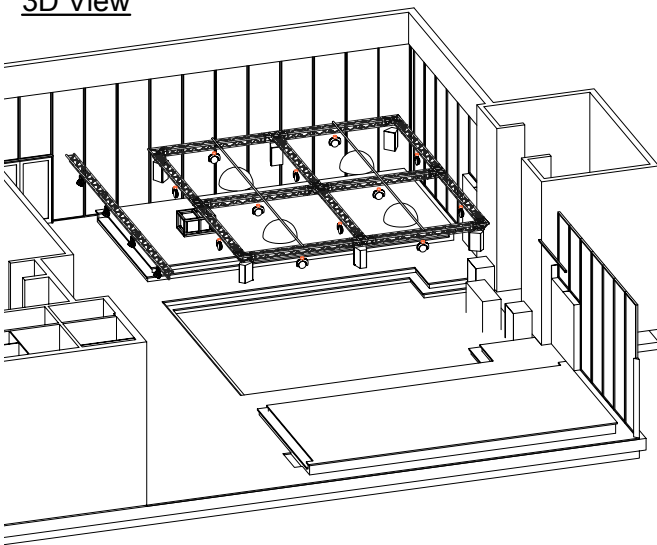


Studio 6 Food and Drinks

Topview



3D View



Standard Rigging & trussing

- 1 x Truss X30D Black 9m00
- 1 x Trussstructure X30D Black 7m71 x 8m29
- Details >> See plans

Standard Lighting kit

- 12 x GLP Impression 90
- 04 x LED Par
- 04 x LED Chandelier
- 01 x DF50 Hazer

Standard Audio Kit

- 06 x Meyer Sound UPA
- 02 x Meyer Sound 650P
- 01 x DJ Kit

Standard Video Kit

- 01 x Christie Projector
- 01 x RollUp Screen (Remote), Size = 2m40W x 1m90H