



Studio 7

The AED Studios are the ideal location to organise big projects. A multi-functional room with a size that transcends all others is undoubtedly studio 7. Besides the unique surface of 2.400m², this black box presents also a unique height of 16m (52,5ft).

DIMENSIONS

Stage floor:	2.400m ² (12.917ft ²)
Length:	80m (131ft)
Width:	30m (98ft)
Height to beams:	14,6m (48ft)
Distance between beams:	10m (33ft)
Height to ceiling:	16m (52ft)
Floor load:	1 ton/m ² (23.735lbs/ft ²)

Weight loading beams:
6.000kg/beam: 500kg/m
(13.230lbs/beam;3.617lbs/ft)

Point load beams:
7.500kg (16.537,5lbs) in the middle
3.500kg (7.717,5lbs) spread over 2 points

2 gates: 3,4m x 4,1m (11ft x 13ft)

BACKGROUND

Black backdrop: 190m (525ft)

OTHERS

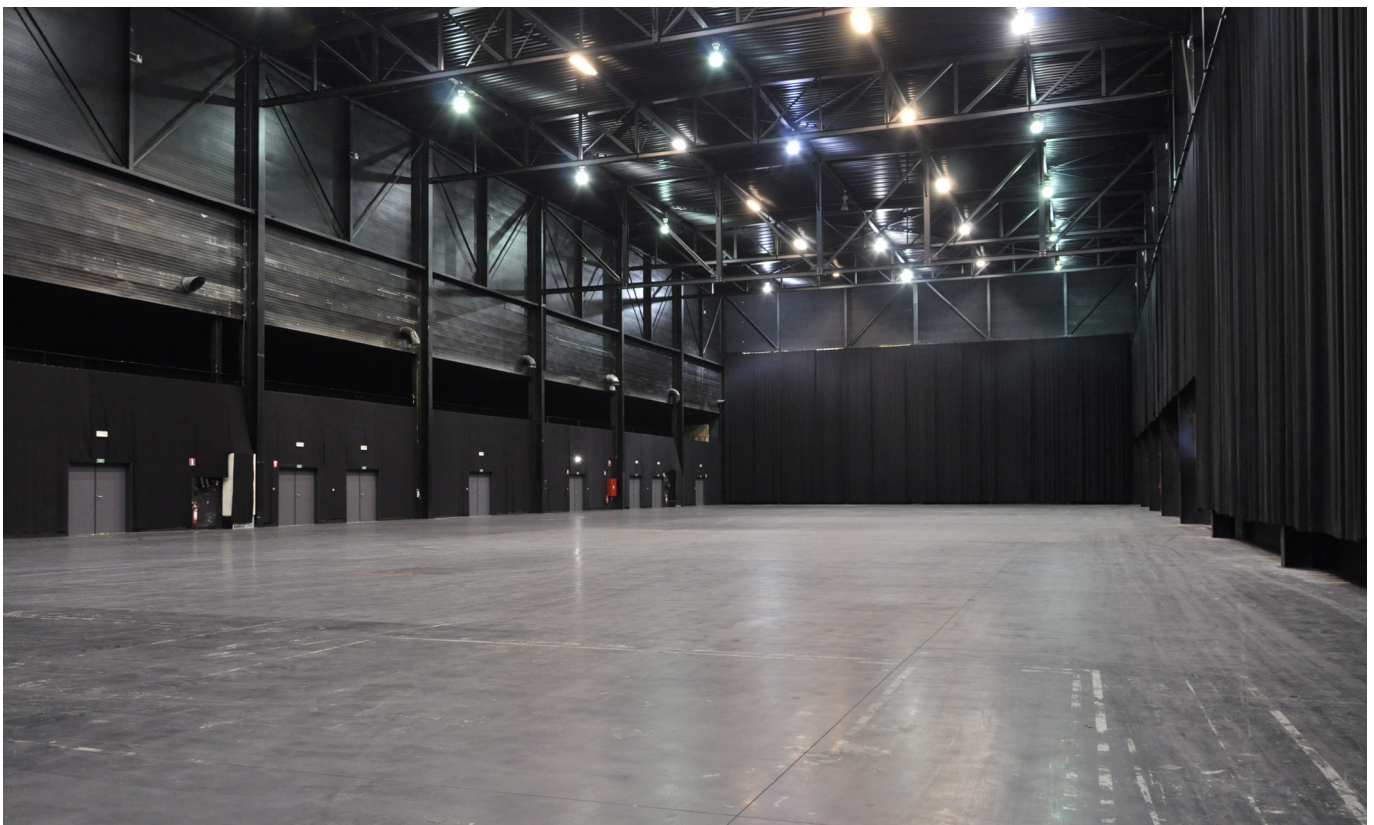
Floorheating system

POWER

4 x 125A CEE
4 x 32A CEE
6 x 400A powerlock

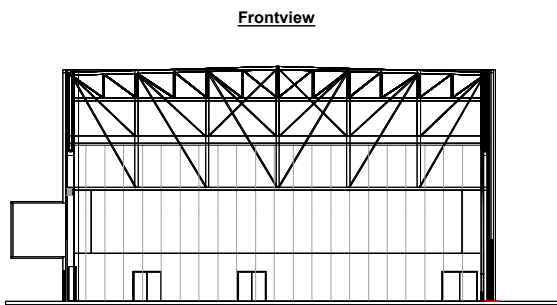
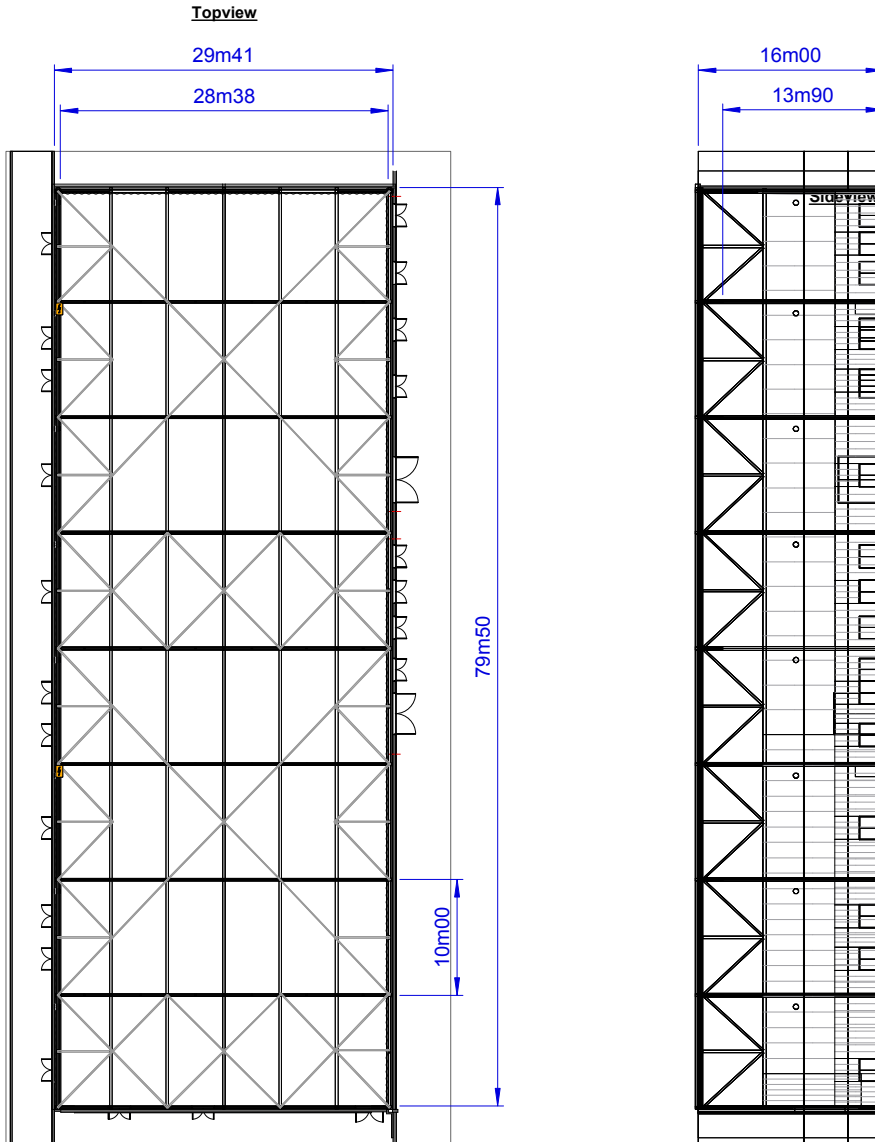
CAPACITY (including tribune)

Dinner: ±1.000 people
Reception: ±2.400 people
Academic: ±3.000 people





Studio 7



- Dimensions Studio**
 Surface studiofloor = 2400m²
 Dimensions Entrance Gate = 3m40W x 4m10H
- Dimensions Beams Studio**
 Height to beams = 13m90
 Height to ceiling = 16m00
 Distance between beams = 10m00
- Loading Figures Studio**
 Max. load/beam = 6000kg/beam or qload = 500kg/m
 Max. allowed loads/beam
 - center point (CPL) = 7500 kg (middle of a beam)
 - double point (TPL) = 3500 kg (each point on 1/3th of the total beam length)
 Max allowed floorpressure = 1000kg/m²
- Electrical Power**
 6 x 400A Powerlock connection
 4 x CEE125A connection 5p (3PH+N+E)
 4 x CEE32A connection 5p (3PH+N+E)
 Cable passages to backstage area and technical area
 Main Circuit board



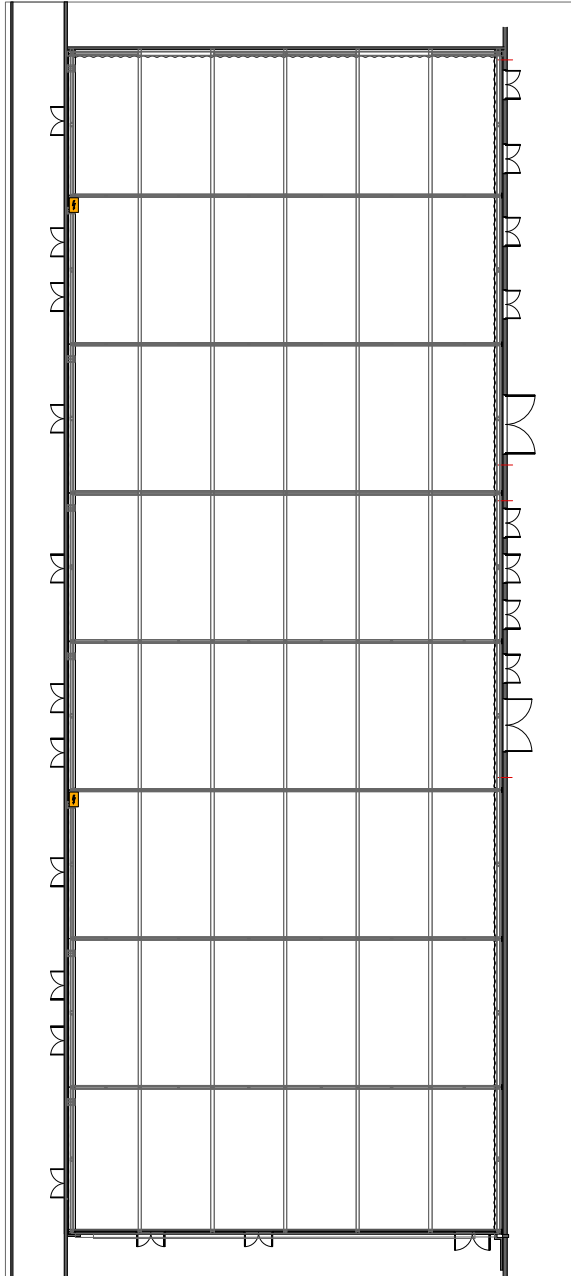
AED Studios
 Fabrikstraat 38
 2547 Lint
 Belgium
 www.aedstudios.com

Studio/Room	Studio 07	Papersize A4
Plan type	Overview	Units [mm]
		Scale 1:500
		Version V1



AED Studios

Studio 7



 AED Studios Fabriekstraat 38 2547 Lint Belgium www.aedstudios.com	Studio/Room	Studio 07	Papersize A4
	Plan type	Empty Plot	Units [mm]
			Scale 1:400
			Version V1