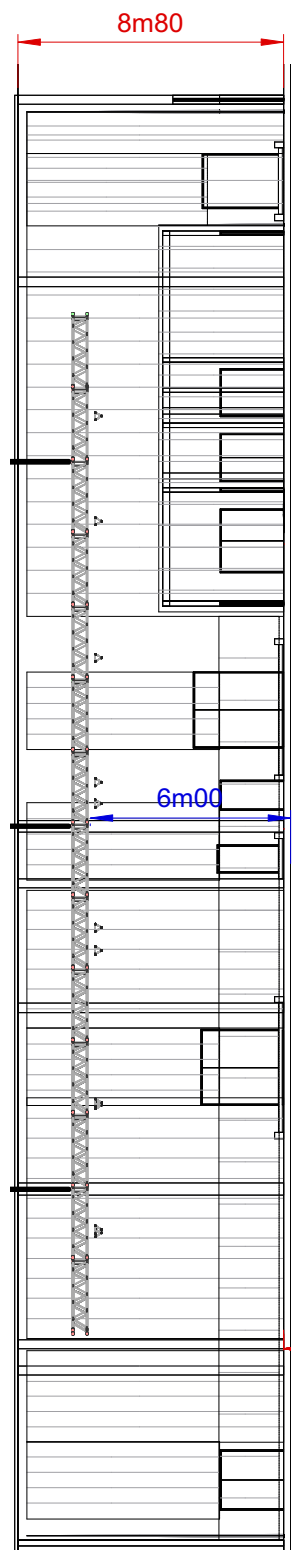


Dimcity fixed installation



Dimensions Studio

Surface studiofloor = 800m²
 Dimensions Entrance Gate = 4m10W x 3m80H

Dimensions Beams Studio

Height to ceiling = 08m80

Loading figures Floor Studio


Max Floor pressure = 1000kg/m²

Electrical Power

- 1 x CEE125A connection 5p (3PH+N+E)
- 1 x CEE63A connection 5p (3PH+N+E)
- 1 x CEE32A connection 5p (3PH+N+E)
- Cable passages to backstage area and technical area
- Main Circuit board

Standard Rigging & trussing

- 1 x Self standing ALC Truss structure (Stage)
- 1 x H40V Trussing for projectors
- 2 x ALC Trusses for audience light
- 1 x Trusskit X30D Reception Area (Circle 5m + truss 10m)
- Details >> See plans

AED Studios
 Fabriekstraat 38
 2547 Lint
 Belgium
 www.aedstudios.com

Studio/Room	Studio 11	Papersize A4
Plan type	Overview	Units [mm]
		Scale 1:250
		Version V2.0