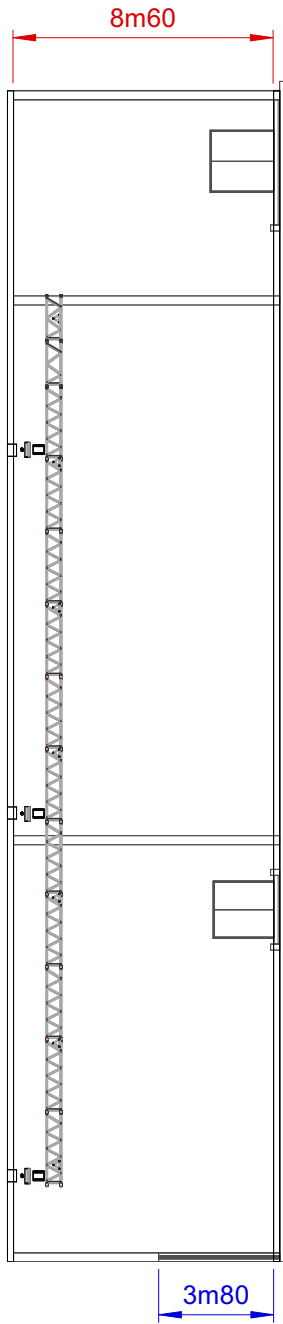
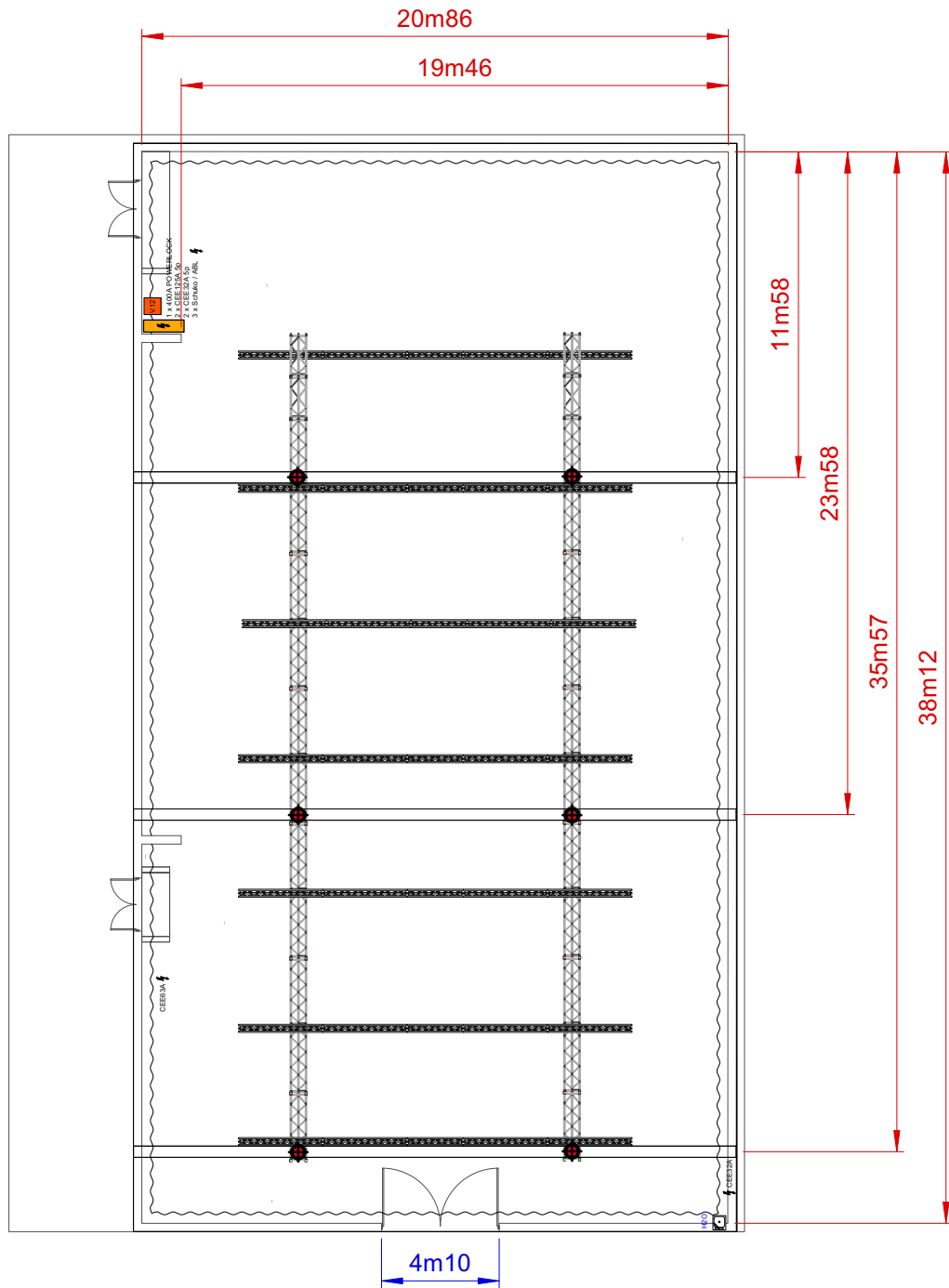


Sideview**Topview****Dimensions Studio**

Surface studiofloor = 800m²
 Dimensions Entrance Gate = 4m10W x 3m80H

Dimensions Beams Studio

Height to ceiling = 08m20

Loading figures Main span Studio

Max Load main span "Total" = 2500kg
 Max Load main span "UDL" = 5 x 500kg
 Max Load main span "TPL" = 1250kg

Loading figures Floor Studio

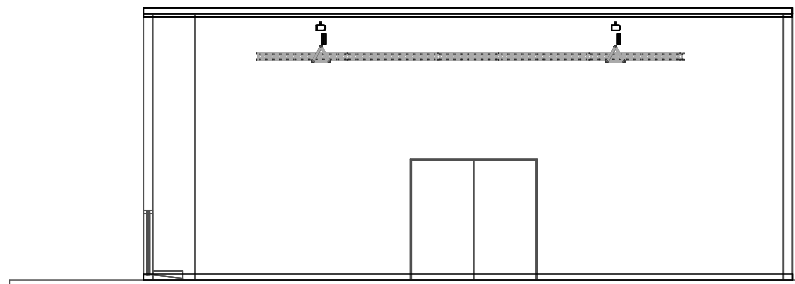
Max Floor pressure = 1000kg/m²

Electrical Power

1 x 400A Powerlock connection
 2 x CEE125A connection 5p (3PH+N+E)
 2 + 1 x CEE32A connection 5p (3PH+N+E)
 3 x ABL/Schuko 16A

Standard Rigging & trussing

02 x Black ALC Truss, length = 29m40
 Each truss rigged on 3 x 1T Hoist
 Span between hoists = See plan
 Maximum trim = 07m20
 All hoist rigged upside down
 07 x Black X30D Truss, length = 14m00
 Trusses installed in ALC Trusses

Frontview


AED Studios
 Fabrikstraat 38
 2547 Lint
 Belgium
 www.aedstudios.com

Studio/Room	Studio 14	Papersize A4
Plan type	Overview	Units [mm]
		Scale 1:250
		Version V2.0